



Strategic Plan 2024 - 2028

*LIWARA CATHOLIC PRIMARY SCHOOL
GREENWOOD*





MESSAGE FROM THE PRINCIPAL

At Liwara Catholic Primary School in Greenwood, we strive to be a strong community where every child has a sense of belonging, feels safe and is known by name and need. This is our Vision of Success and is well proven as foundational to learning. In recognising the need to ensure strong foundations, we also aim to be an excellent Catholic school - providing a Catholic environment that empowers children to be faith filled, confident and life-long learners. It is with great pleasure that I present our *Strategic Plan 2024 – 2028* which will guide the next stage towards this aspiration.

In formulating this Strategic Plan, we have assessed the school's journey to date – our history, how well we are going as a school, what are the emerging challenges likely to impact learning and our community and how our community is changing. The feedback we have received suggests that the school is performing well, but like all schools, we are keen to do more. We are also cognisant of the Catholic Education Commission of WA (CECWA) *Strategic Directions 2021 – 2023*¹, as they too strive for the best outcomes for all. We accept the CECWA challenge to be:

- A Catholic school of excellence
- A Catholic pastoral community
- Accessible, affordable and sustainable
- A school where Christ-centred leadership is evident

This Strategic Plan sets out the desired outcomes and strategies to bring the above about over the next four years. It should be noted that there are many very successful programs and initiatives at the school which will continue, albeit they may not appear in this Strategic Plan. This document only highlights the areas we are targeting for additional attention and focus.

We will focus upon:

- **Year 1 and Year 2 early intervention programs and screening in Kindergarten and Pre-Primary:** this is based upon research which indicates the early, positive, long-term effect of quality early learning on the educational, social and health outcomes of children in later life.²
- **Continue our focus on Mathematics Reasoning:** this embraces the idea that sustained quality mathematical thinking, or reasoning, is the key to the success of current and future generations of mathematics students.³
- **Analysis and discussion of data:** this is based upon research which indicates that data and appropriate, data driven decision making, is the key to student progress.⁴
- **Meeting the needs of English as an Additional Language or Dialect (EAL/D) students:** this is based upon research which shows that this is an increasing number in our community and that approximately 1 in 4 students in Australia have English as a second language or dialect.⁵
- **Presenting well to the external community:** within a budget focussed on learning and enhancing the large, natural site on which we are located.

I look forward to continuing to work in partnership with parents as we embark on this plan and ensure that all experience 'Strength in Community'.

Mrs Andrea Millar
Principal

¹ Catholic Education Commission of WA (CECWA) *Strategic Directions 2021 – 2023*

² Centre for Disease Control and Prevention (2021), *Helping Children Develop to Their True Potential and Live Healthier Lives*

³ *The Critical Thinking Consortium* (2022), *Resources - Critical Thinking in Math: A Focus on Mathematical Reasoning Competencies*

⁴ Australian Council for Education Research (2016), *School Improvement Tool Page 4*, Canberra

⁵ *The Australian Curriculum* (2023), *Meeting the needs of students for whom English is an Additional Language or Dialect*

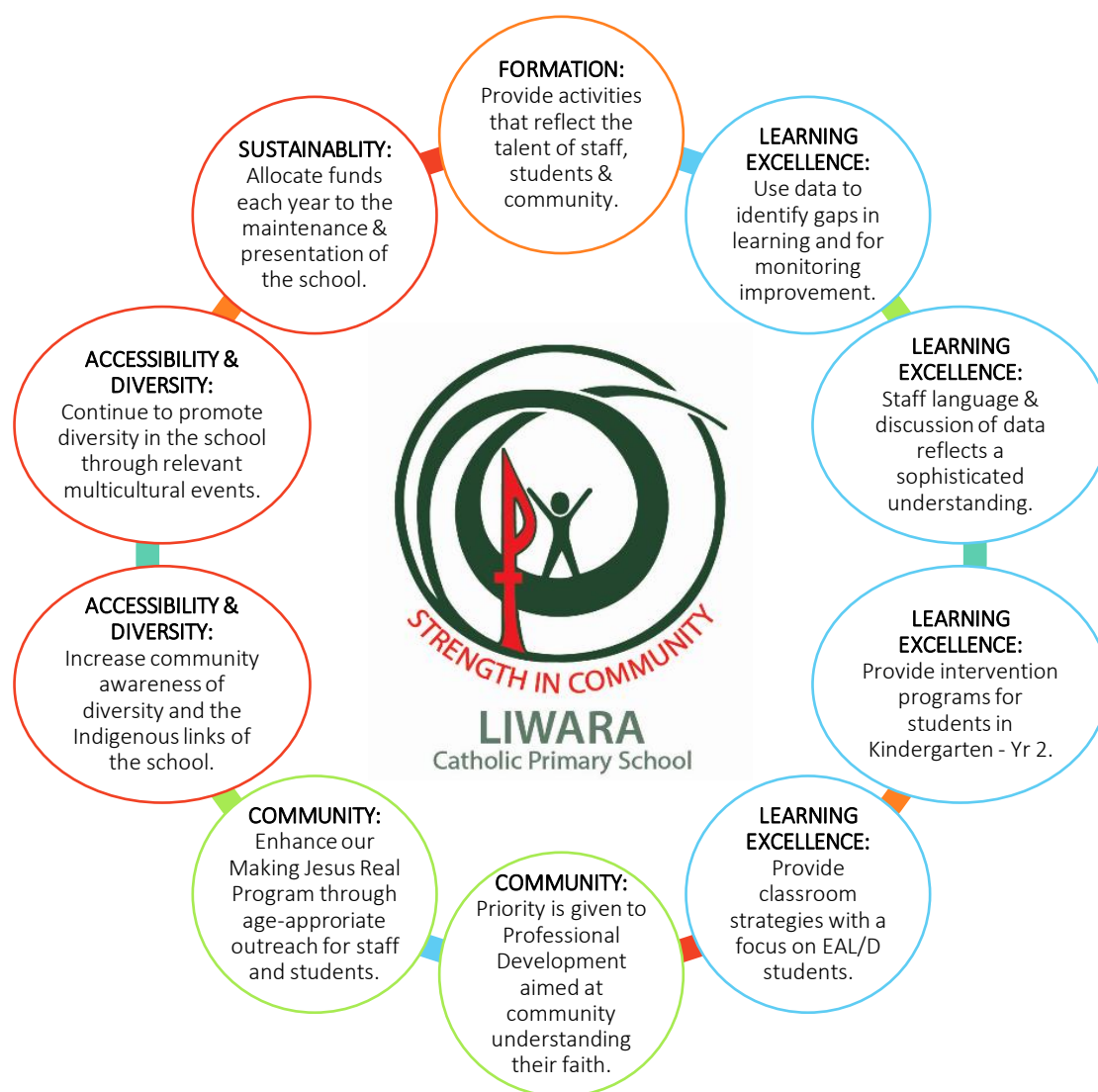
THE OUTCOMES WE SEEK AND PRIORITIES

GOAL 1: CHRIST-CENTRED LEADERS – Inclusive leadership formation and development that reflects the diverse talents of staff, students, and community.

GOAL 2: SCHOOL OF EXCELLENCE – A high priority is given to early intervention (K-2 Programs) and to school-wide analysis and discussion of data - including academic, attendance, behavioural and student wellbeing outcomes.

GOAL 3: CATHOLIC PASTORAL COMMUNITY – Being an inclusive community that is welcoming and supports mission-inspired (age appropriate) outreach.

GOAL 4: ACCESSIBLE, AFFORDABLE AND SUSTAINABLE – Responding to the diverse needs of our students and the surrounding community by increasing the awareness of Indigenous links as well as the external presentation of the school.



OUR VISION OF SUCCESS AND CORE VALUES

At Liwara Catholic Primary School it is important that, first and foremost, we are recognised as a Catholic school. Our Vision of Success is to be a community with strong connections, where every child has a sense of belonging, feels safe and is known by name and need.

Underpinning the above is a commitment to the core values of:

Faith, Trust, Respect and Mercy

Our promise is that these core values will be emphasised in classrooms and will be integrated into the life of the school.



Liwara Catholic Primary School
5 Tuart Road, Greenwood, WA 6024

Telephone: (08) 6224 2000
Email: enquiries@liwara.edu.au

Website: www.liwara.wa.edu.au

Prepared with the assistance of

